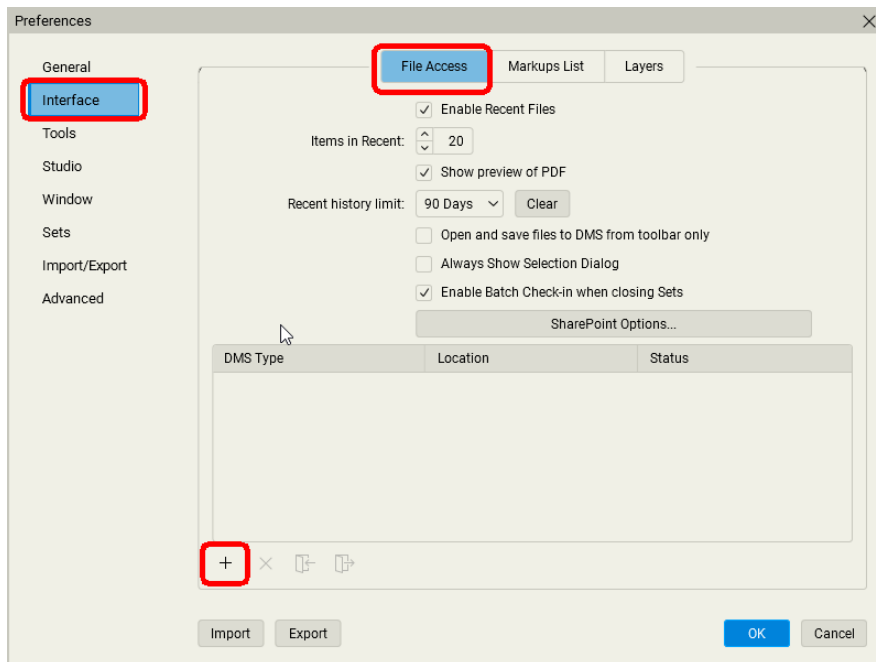
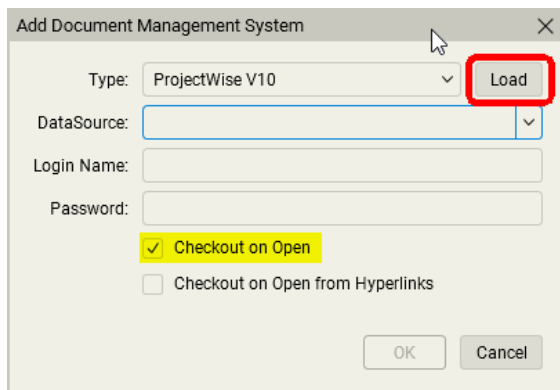


# Bluebeam – Setting up ProjectWise Integration

- Open Bluebeam Revu
- Click on Revu in the top left corner
- Click Preferences
  - Or simply press Ctrl +K to bring up the Preferences dialog.
- Select Interface
- Select the File Access tab



- Select “+” to add a new source
  - A new dialog will open



- The type should be ProjectWise V10

# Bluebeam – Setting up ProjectWise Integration



- Check the Checkout on Open box
- Select Load
- Select the arrow down at end of Datasource
  - This will populate your Datasource options
  - Select your District Caching Server or Central Office Datasource
    - This depends on your location
- Select OK to accept Datasource
- Click OK to exit