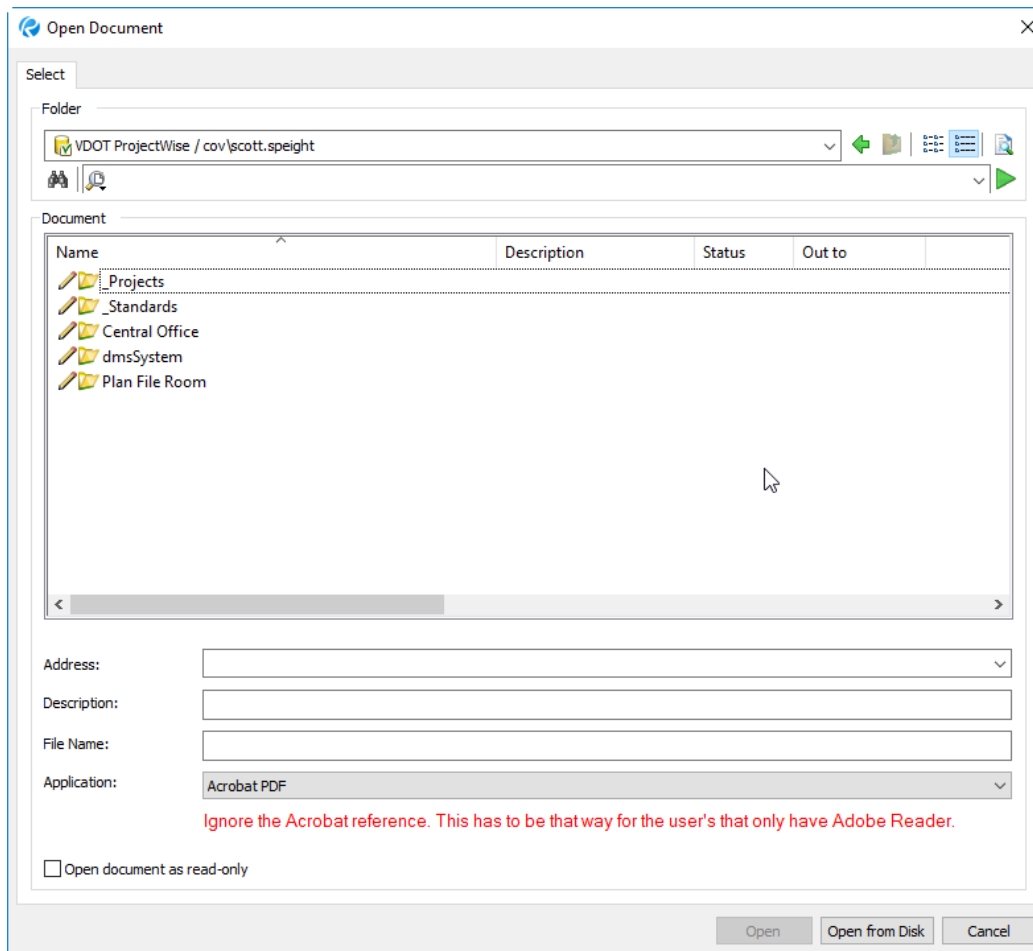


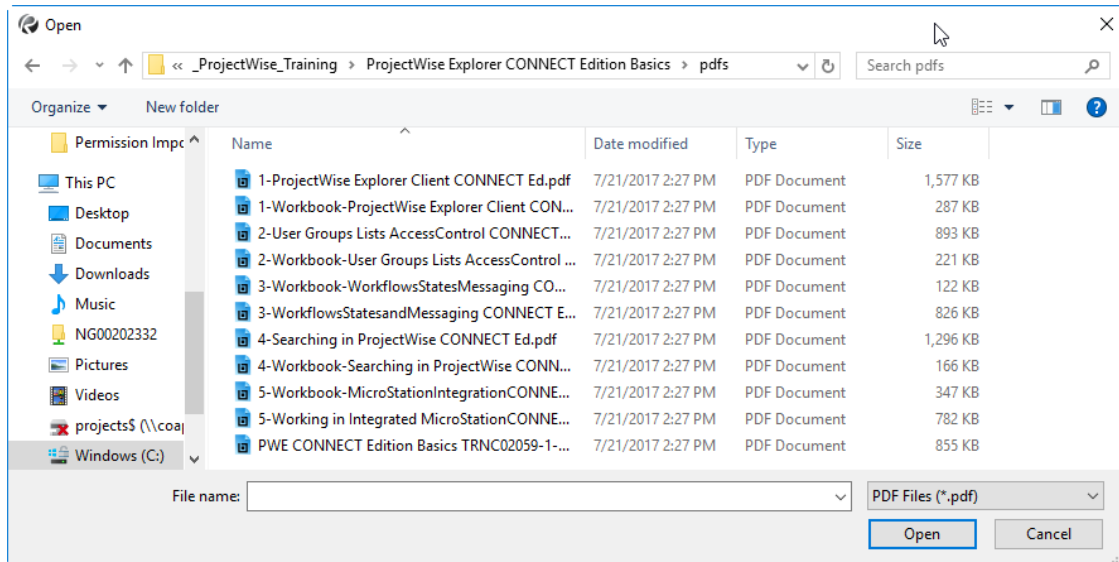
Bluebeam – Opening a ProjectWise Document

- Click on File
- Select Open
- ProjectWise should log you in using your windows credentials
- You will be looking at the ProjectWise Datasource
- Navigate to the PDF you want to open or view



- Check the box in the lower left if you only want to view it as read only
- You may still open files on your local disk or network drive by clicking on Open from Disk

Bluebeam – Opening a ProjectWise Document



- From this dialog, you can navigate anywhere locally or on the network